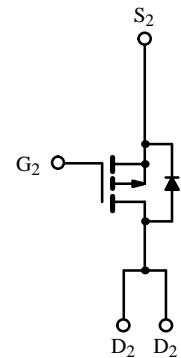
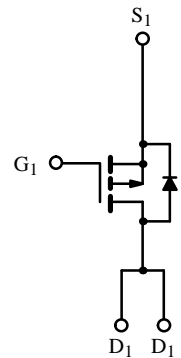
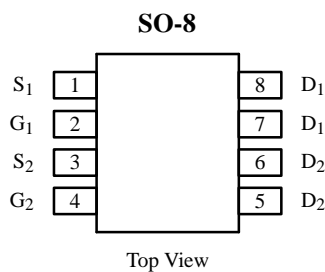


Dual P-Channel 60-V, 175°C Rated MOSFET

Product Summary

V _{DS} (V)	r _{DS(on)} (Ω)	I _D (A)
-60	0.120 @ V _{GS} = -10 V	± 3.1
	0.150 @ V _{GS} = -4.5 V	± 2.8

175°C Rated
Maximum Junction Temperature
TrenchFET™
Power MOSFETs



Absolute Maximum Ratings (T_A = 25°C Unless Otherwise Noted)

Parameter	Symbol	Limit	Unit
Drain-Source Voltage	V _{DS}	-60	V
Gate-Source Voltage	V _{GS}	± 20	
Continuous Drain Current (T _J = 175°C) ^a	I _D	T _A = 25°C	± 3.1
		T _A = 70°C	± 2.6
Pulsed Drain Current	I _{DM}	± 30	A
Continuous Source Current (Diode Conduction) ^a	I _S	-2.0	
Maximum Power Dissipation ^a	P _D	T _A = 25°C	2.4
		T _A = 70°C	1.7
Operating Junction and Storage Temperature Range	T _J , T _{stg}	-55 to 175	°C

Thermal Resistance Ratings

Parameter	Symbol	Limit	Unit
Maximum Junction-to-Ambient ^a	R _{thJA}	62.5	°C/W

Notes

a. Surface Mounted on FR4 Board, t ≤ 10 sec.

Updates to this data sheet may be obtained via facsimile by calling Siliconix FaxBack, 1-408-970-5600. Please request FaxBack document #70166.

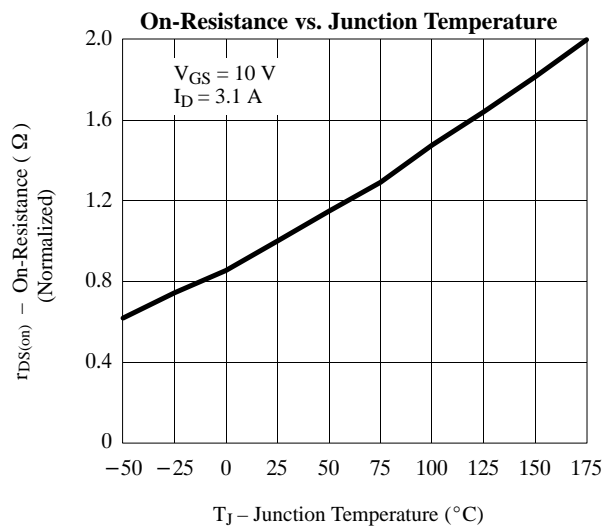
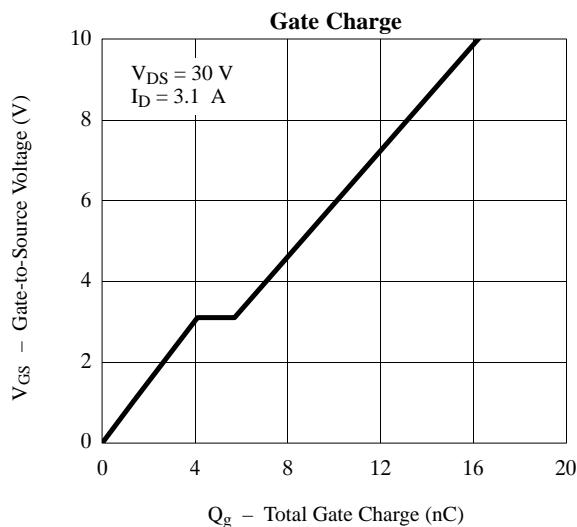
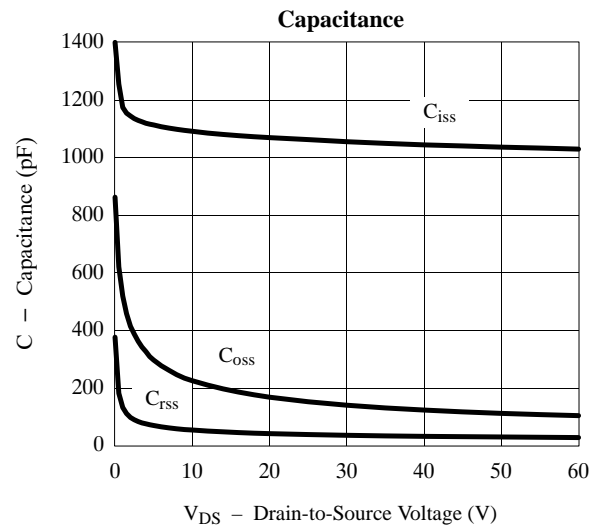
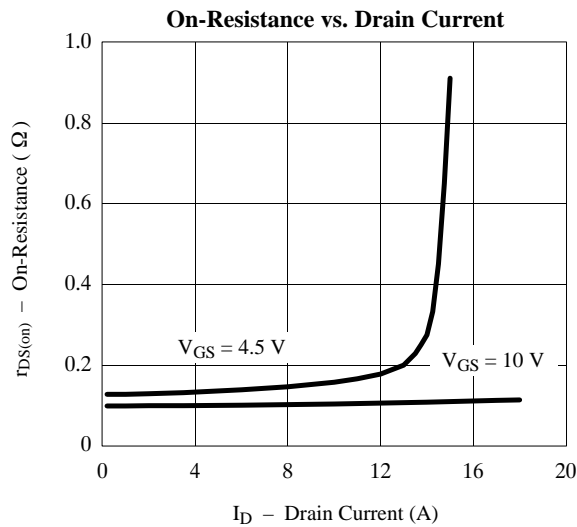
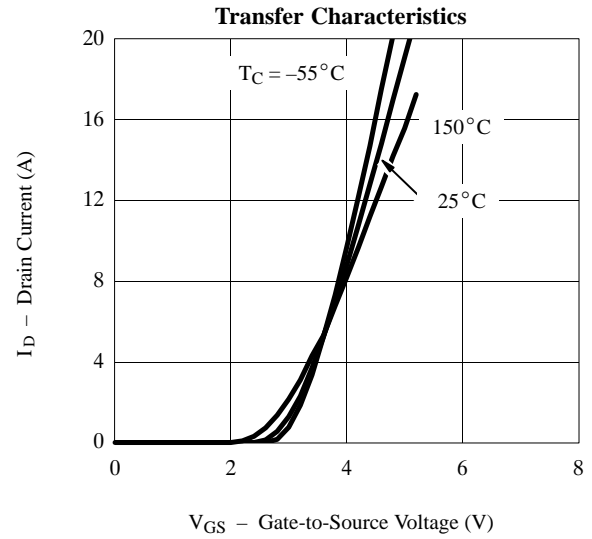
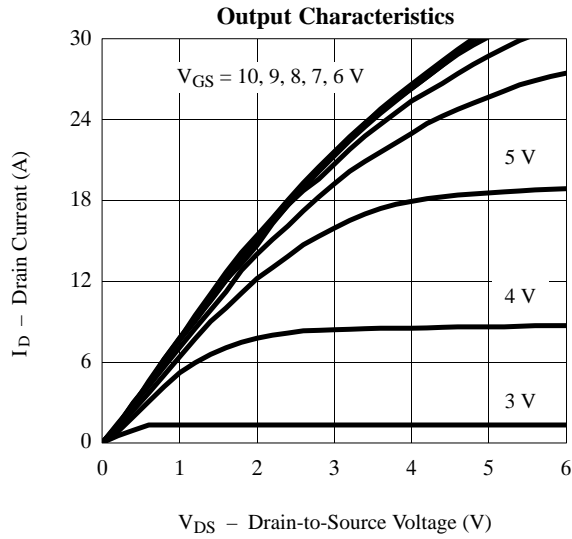
Specifications ($T_J = 25^\circ\text{C}$ Unless Otherwise Noted)

Parameter	Symbol	Test Condition	Min	Typ ^a	Max	Unit
Static						
Gate Threshold Voltage	$V_{GS(th)}$	$V_{DS} = V_{GS}, I_D = -250\ \mu\text{A}$	-1			V
Gate-Body Leakage	I_{GSS}	$V_{DS} = 0\ \text{V}, V_{GS} = \pm 20\ \text{V}$			± 100	nA
Zero Gate Voltage Drain Current	I_{DSS}	$V_{DS} = -60\ \text{V}, V_{GS} = 0\ \text{V}$			-2	μA
		$V_{DS} = -60\ \text{V}, V_{GS} = 0\ \text{V}, T_J = 55^\circ\text{C}$			-25	
On-State Drain Current ^b	$I_{D(on)}$	$V_{DS} \leq -5\ \text{V}, V_{GS} = -10\ \text{V}$	-20			A
Drain-Source On-State Resistance ^b	$r_{DS(on)}$	$V_{GS} = -10\ \text{V}, I_D = -3.1\ \text{A}$		0.100	0.120	Ω
		$V_{GS} = -4.5\ \text{V}, I_D = -2.8\ \text{A}$		0.125	0.150	
Forward Transconductance ^b	g_{fs}	$V_{DS} = -15\ \text{V}, I_D = -3.1\ \text{A}$		7.5		S
Diode Forward Voltage ^b	V_{SD}	$I_S = -2.0\ \text{A}, V_{GS} = 0\ \text{V}$		-0.8	-1.2	V
Dynamic^a						
Total Gate Charge	Q_g	$V_{DS} = -30\ \text{V}, V_{GS} = -10\ \text{V}, I_D = -3.1\ \text{A}$		16	25	nC
Gate-Source Charge	Q_{gs}			4		
Gate-Drain Charge	Q_{gd}			1.6		
Turn-On Delay Time	$t_{d(on)}$	$V_{DD} = -30\ \text{V}, R_L = 30\ \Omega$ $I_D \cong -1\ \text{A}, V_{GEN} = -10\ \text{V}, R_G = 6\ \Omega$		8	15	ns
Rise Time	t_r			10	20	
Turn-Off Delay Time	$t_{d(off)}$			12	25	
Fall Time	t_f			35	50	
Source-Drain Reverse Recovery Time	t_{rr}	$I_F = -2.0\ \text{A}, di/dt = 100\ \text{A}/\mu\text{s}$		60	90	

Notes

- a. Guaranteed by design, not subject to production testing.
 b. Pulse test; pulse width $\leq 300\ \mu\text{s}$, duty cycle $\leq 2\%$.

Typical Characteristics (25°C Unless Noted)



Typical Characteristics (25°C Unless Noted)

